

Kirby Morgan® Diamond Helmet P/N 500-710 / 500-711

Location #	Part #	Description
1	510-754	Head Cushion Assembly
	510-722	Head Cushion Bag
	510-837	Head Cushion Foam Spacer Assembly (Order P/N 525-745)
2	510-836	Head Cushion Foam Spacer Bag
3	510-575	Nose Block Pad
4	545-015	Nose Block Device
5	520-020	Valve Body
6	510-550	Valve, Oral Nasal
7	510-740	Diamond Oral Nasal
8	530-058	Screw
9	330-405	Washer, Lock
10	540-581	Handle, KM Diamond
11	530-059	Screw
12	510-795	Grip, Handle
13	430-075	Washer
14	530-052	Screw
15	505-767	Handle Assembly, KM Diamond
16	560-517	Helmet Shell, Stainless Steel
17	510-260	O-ring, View Port
18	520-004	Face Port
19	540-563	Port Retainer
20	530-059	Screw
21	550-566	Adapter
22	530-052	Screw
23	505-738	Port Retainer Assembly
24	530-078	Screw
25	560-300	Zinc Whisker Anode
26	550-062	Knob, Nose Block
27	555-180	Packing Nut, Nose Block
28	510-008	O-ring
29	510-010	O-ring
30	510-772	Bypass Equalizer Tube
31	530-074	Screw
32	505-375	Surface Bypass Valve Assembly
33	530-527	Washer
34	530-059	Screw
35	520-049	Tie Wrap
36	555-170	Hex Bushing 1/4" x 3/8" NPT (Included with purchase—not installed)
37	530-076	Screw
38	540-158	Bracket, Surface Bypass Valve
39	505-753	Airtrain Assembly, Stainless Helmet
40	530-415	Washer
41	530-317	Nut
42	530-083	Screw
43	550-571	Sleeve
44	530-535	Washer
45	550-574	Sleeve
46	530-032	Screw
47	540-039	Front Stand Off

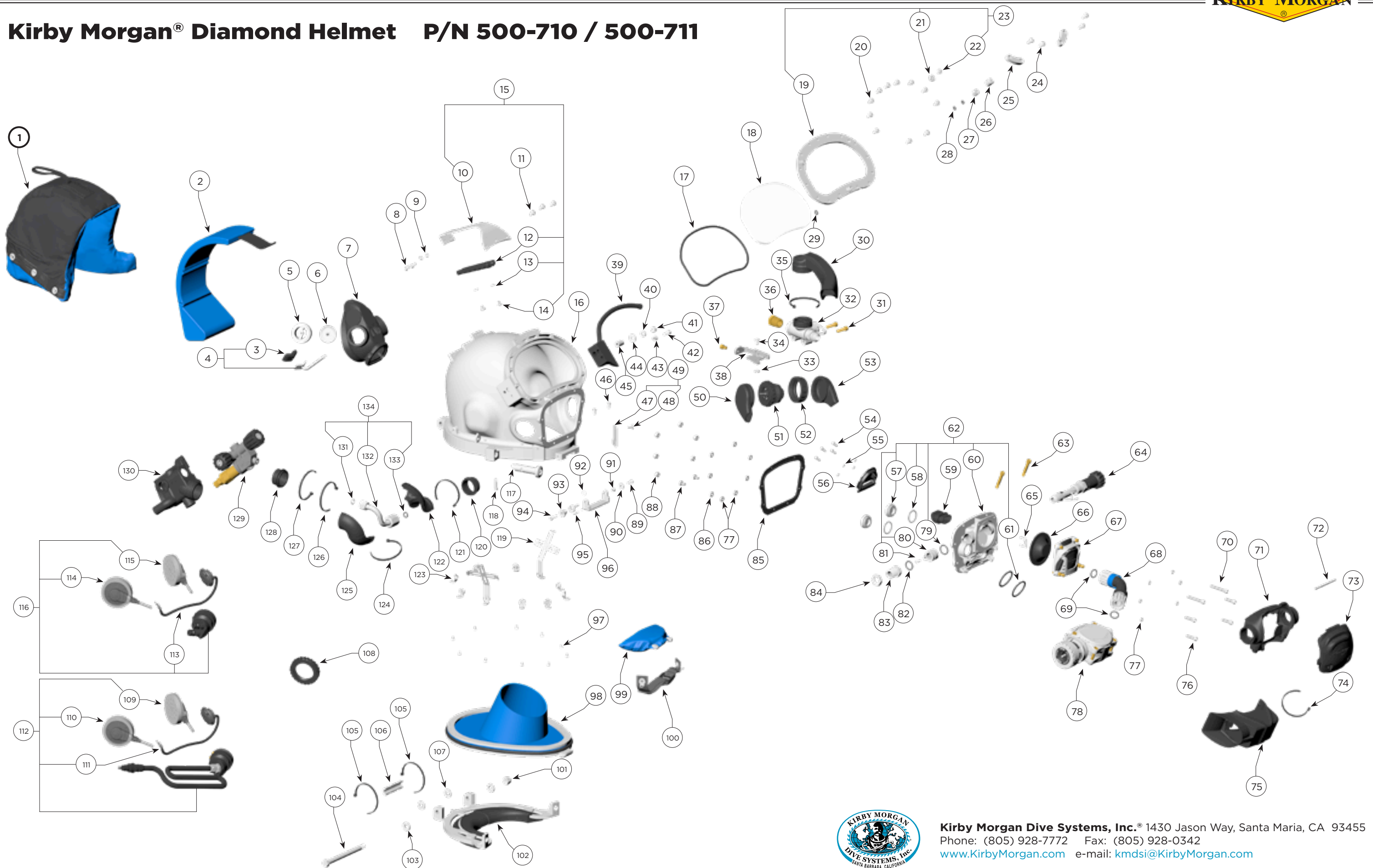
Location #	Part #	Description
48	530-059	Screw
49	525-116	Front Stand Off Kit (2 each of Loc. # 47 and 48)
50	510-735	Pickup Tube
51	505-378	Water Purge Assembly
52	550-141	Assembly Retainer Ring
53	510-735	Pickup Tube
54	830-015	Screw
55	330-205	Washer
56	520-550	Oral Nasal Mount
57	550-136	Port Plug, Large
58	310-021	O-ring
59	520-552	Inhalation Tube
60	560-559	Regulator Pod
61	510-127	O-ring
62	505-385	Diamond Pod Subassembly (includes loc. #s 79, 80 and 81)
63	530-309	Cap Screw
64	505-752	Diamond Main Tube Assembly
65	540-531	Lock Clip
66	510-789	Diaphragm Assembly
67	505-373	Regulator Cover/Retainer Assembly
68	505-376	Surface Bypass Hose Assembly (includes loc. # 69)
69	510-016	O-ring
70	530-089	Screw
71	510-732	Shroud, Inhale Regulator
72	550-644	Pin
73	510-733	Access Cover
74	520-038	Tie Wrap
75	510-731	Diamond Valve Shroud
76	530-086	Screw
77	430-134	Washer
78	505-400	Diamond Exhaust Assembly
79	510-018	O-ring
80	550-162	Hex Insert
81	530-018	Screw
82	510-017	O-ring
83	550-533	Bent Tube Adapter
84	550-050	Jam Nut
85	510-403	Gasket, Pod
86	530-527	Washer
87	530-059	Screw
88	530-145	Lock Nut
89	530-035	Screw
90	530-546	Washer for Swing Catch
91	550-061	Spacer
92	520-167	Teflon® Washer for Swing Catch
93	550-122	Spring Spacer
94	530-045	Screw
95	535-825	Spring, Swing Catch

Location #	Part #	Description
96	540-086	Swing Catch
97	530-037	Screw
98	505-746	Neck Ring Assembly, Medium, S.S.
99	510-683	Chin Cushion
	510-639	Chin Cushion Bag
100	505-748	Chin Strap Assembly, w/Snaps, S.S.
101	530-028	Lock Nut
102	505-755	Locking Collar Assembly, S.S.
103	530-545	Washer
104	530-027	Hinge Bolt
105	520-038	Tie Wrap
106	560-304	Zinc Sleeve Anode
107	520-165	Washer
108	320-026	Comm. Mount Nut
109	515-019	Earphone, Left, 15.5"
110	515-018	Earphone, Right, 9"
111	515-029	Microphone Assembly
112	515-024	Comm, Assembly w/MWPC
113	515-029	Microphone Assembly
114	515-018	Earphone, Right, 9"
115	515-019	Earphone, Left, 15.5"
116	515-023	Comm. Assembly w/Posts
117	505-110	Sealed Pull Pin Assembly
118	530-015	Screw
119	505-742	Earphone Retainer Assembly, S.S.
120	550-572	Adapter Sleeve
121	520-039	Tie Wrap
122	510-737	Water Tube-B
123	505-740	Snap Tab Assembly, S.S.
124	520-039	Tie Wrap
125	510-736	Water Tube-A
126	520-039	Tie Wrap
127	520-049	Tie Wrap
128	550-572	Adapter Sleeve
129	505-732	Side Block Assembly
130	510-734	Side Block Shroud
131	520-033	O-ring, Teflon®
132	555-074	Bent Tube Assembly
133	510-012	O-ring
134	555-075	Bent Tube w/O-rings

⚠ CAUTION

Use only Kirby Morgan original replacement parts. The use of other manufacturers' parts will interfere with the performance characteristics of your life support equipment and may jeopardize your safety. Additionally, any substitutions will void any warranties offered by KMDSI. When ordering spares, always insist on Kirby Morgan original parts.

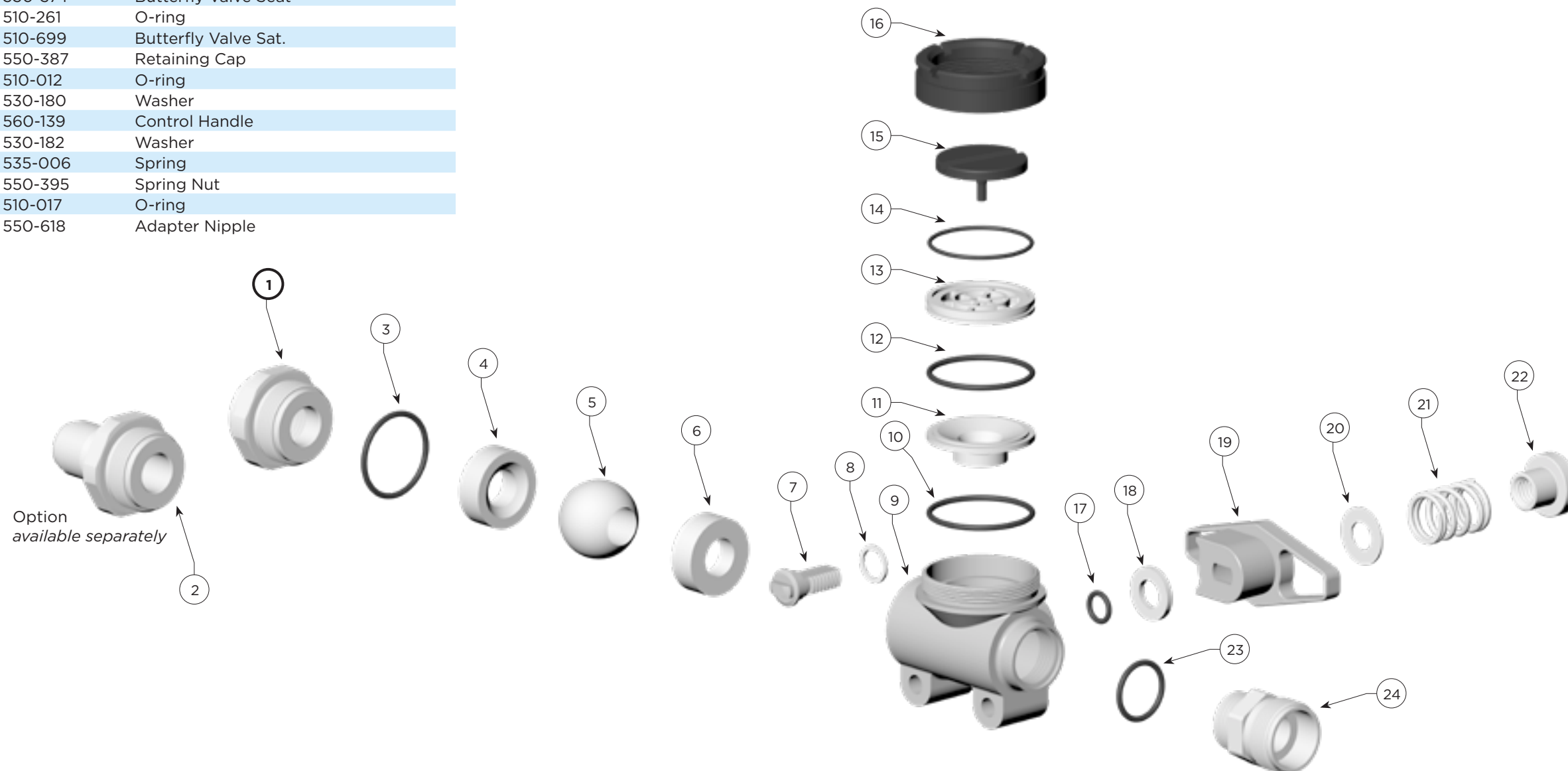
Kirby Morgan® Diamond Helmet P/N 500-710 / 500-711



Kirby Morgan Dive Systems, Inc.® 1430 Jason Way, Santa Maria, CA 93455
 Phone: (805) 928-7772 Fax: (805) 928-0342
www.KirbyMorgan.com e-mail: kmdsi@KirbyMorgan.com

Surface Bypass Valve Assembly P/N 505-375

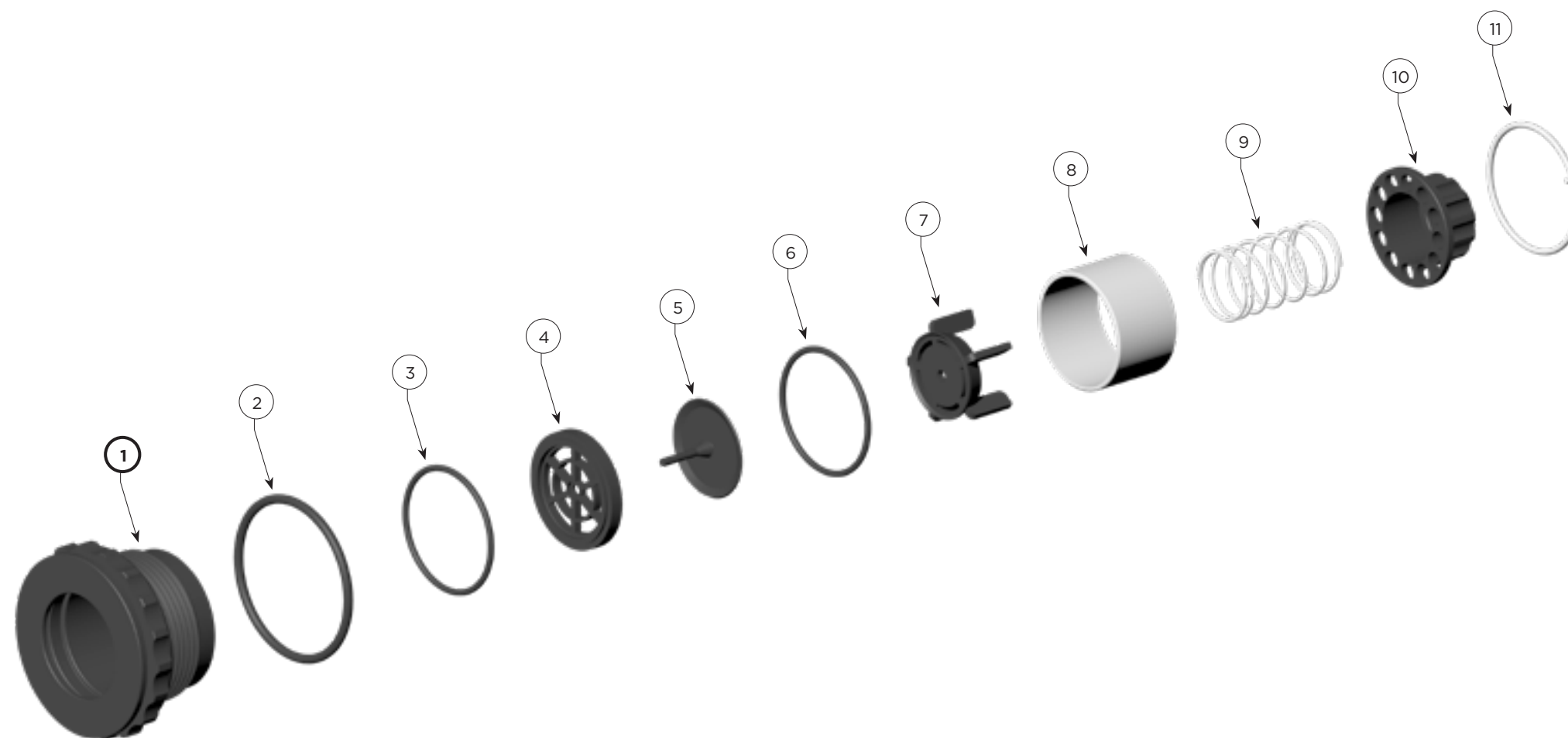
Location #	Part #	Description
1	550-616	Hose Fitting Adapter 1/2" NPT
2	550-390	Q.D. Adapter (<i>optional</i>)
3	310-022	O-ring
4	550-388	Ball Seal
5	550-389	Control Ball
6	550-388	Ball Seal
7	550-391	Ball Control Stem
8	530-179	Stem Washer
9	550-385	Surface Bypass Valve Body
10	510-026	O-ring
11	550-386	Exhaust Port Seal
12	510-026	O-ring
13	550-374	Butterfly Valve Seat
14	510-261	O-ring
15	510-699	Butterfly Valve Sat.
16	550-387	Retaining Cap
17	510-012	O-ring
18	530-180	Washer
19	560-139	Control Handle
20	530-182	Washer
21	535-006	Spring
22	550-395	Spring Nut
23	510-017	O-ring
24	550-618	Adapter Nipple



Kirby Morgan Dive Systems, Inc.® 1430 Jason Way, Santa Maria, CA 93455
 Phone: (805) 928-7772 Fax: (805) 928-0342
www.KirbyMorgan.com e-mail: kmdsi@KirbyMorgan.com

Water Purge Assembly P/N 505-378

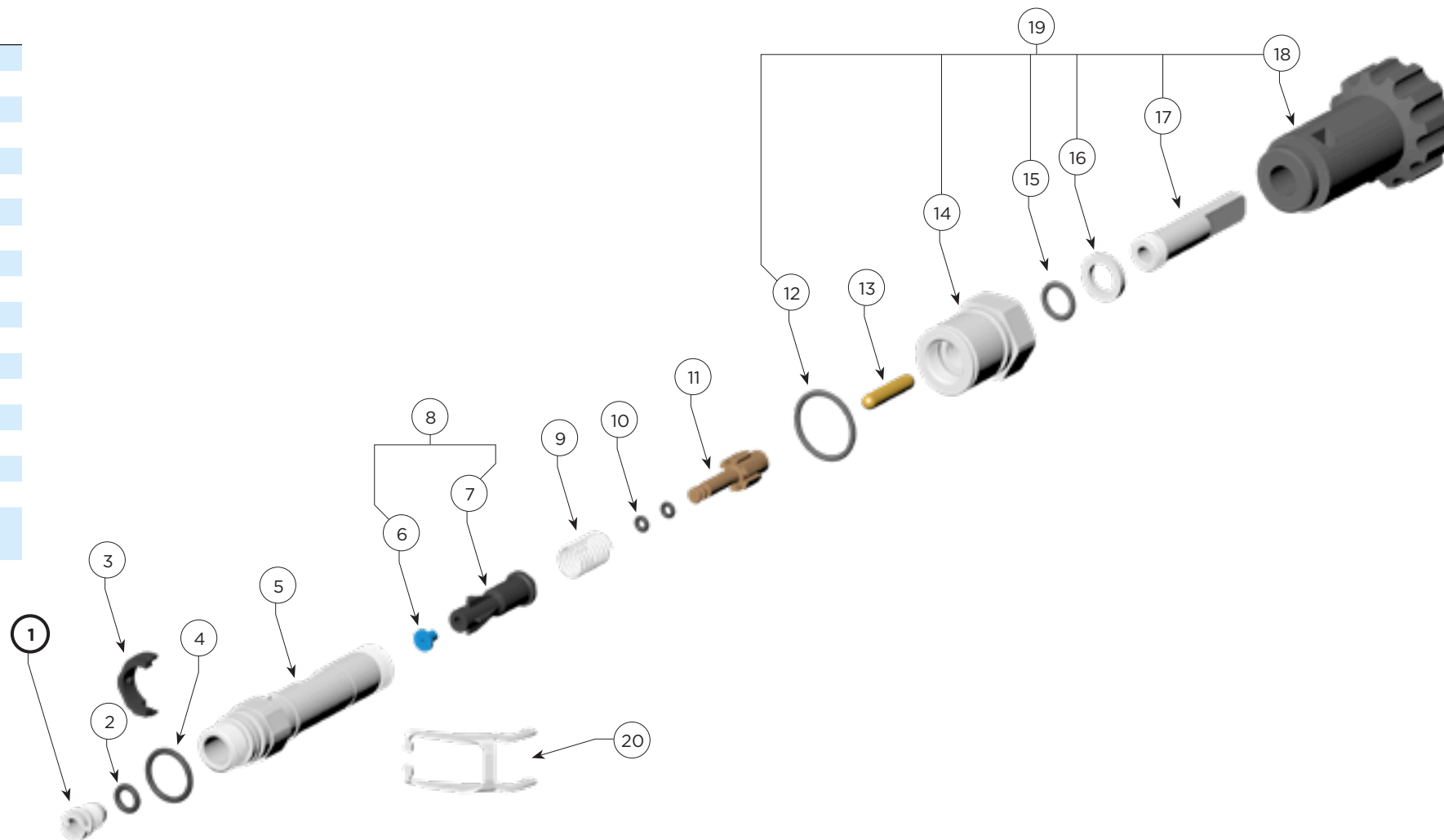
Location #	Part #	Description
1	550-383	Main Body
2	510-029	O-ring
3	910-101	O-ring
4	520-252	Valve Seat Insert
5	510-697	Exhaust Valve
6	910-101	O-ring
7	550-082	Valve Cap
8	550-381	Compression Sleeve
9	535-005	Spring
10	550-382	Retaining Cap
11	540-014	Retaining Ring



Kirby Morgan Dive Systems, Inc.® 1430 Jason Way, Santa Maria, CA 93455
 Phone: (805) 928-7772 Fax: (805) 928-0342
www.KirbyMorgan.com e-mail: kmdsi@KirbyMorgan.com

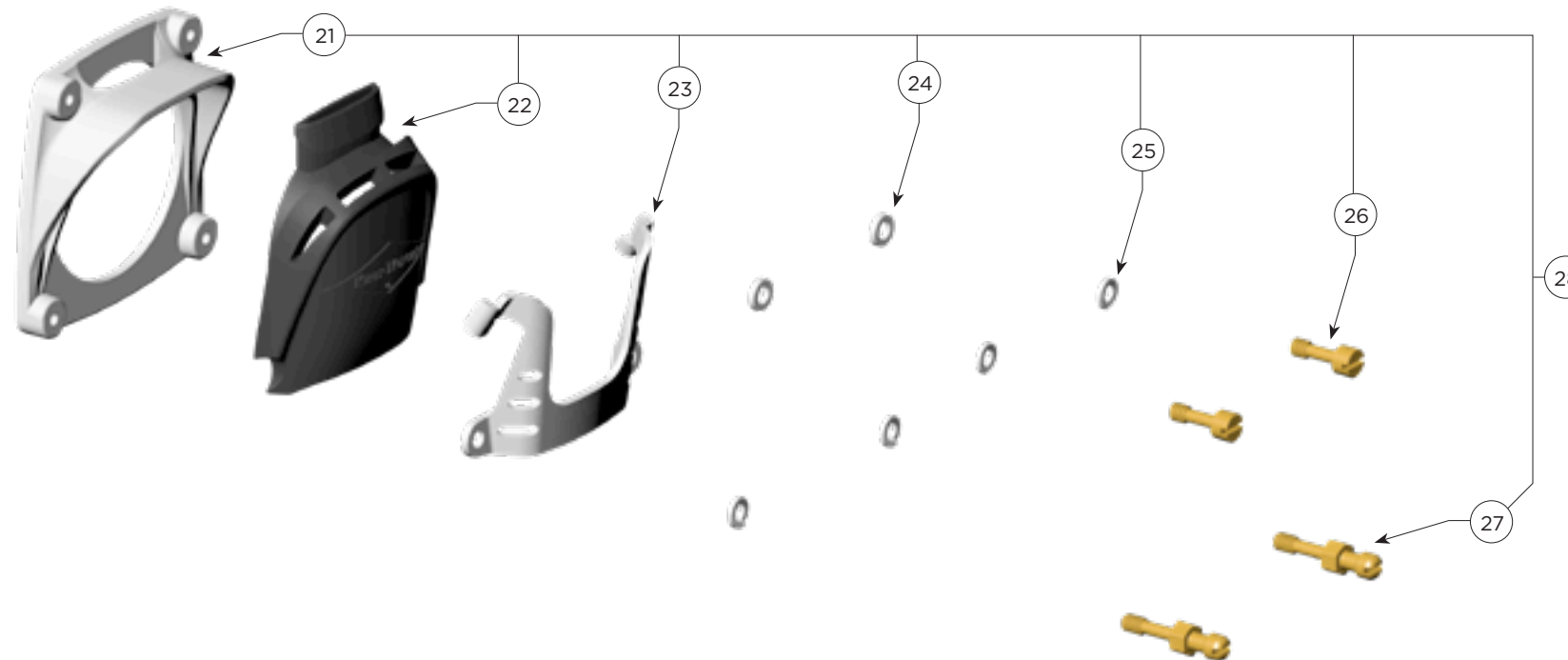
Diamond Main Tube Assembly P/N 505-752

Location #	Part #	Description
1	550-163	Adjustable Nipple
2	510-010	O-ring
3	220-056	Lever Bearing Clip
4	510-015	O-ring
5	550-179	Diamond Main Tube
6	210-060	Valve Seat
7	220-050SS	Inlet Valve, Stainless Steel Tube
8	205-020	Inlet Valve Assembly
9	235-015	Spring
10	210-055	O-ring, Balanced
11	550-549	Balance Spacer
12	510-017	O-ring
13	550-643	Transfer Pin
14	550-567	Adjustment Packing Nut
15	510-012	O-ring
16	550-640	Shaft Bearing Washer
17	550-158	Adjustment Shaft
18	520-517	Flex Knob
19	505-088	Adjustment (Flex) Knob/Packing Nut Assembly (Loc. #13 NOT Included)
20	240-008	Lever Arm



Regulator Cover Assembly P/N 505-373

21	560-558	Regulator Cover Frame
22	510-788	Regulator Purge Cover
23	540-053	Cover Guard
24	530-518	Washer
25	330-405	Lock Washer
26	530-099	Cover Retainer Screw
27	550-074	Bishop Pin
28	505-373	Regulator Cover Assembly



Kirby Morgan Dive Systems, Inc.® 1430 Jason Way, Santa Maria, CA 93455
 Phone: (805) 928-7772 Fax: (805) 928-0342
www.KirbyMorgan.com e-mail: kmdsi@KirbyMorgan.com

Diamond Exhaust Assembly P/N 505-400

Location #	Part #	Description
1	550-184	Split Retainer
2	830-015	Screw
3	550-631	Control Knob
4	510-128	O-ring
5	505-135	Spring Adjuster
6	535-403	Overpressure Spring
7	550-635	Retainer Housing
8	535-401	Puck Spring
9	505-366	Puck w/Pin
10	510-779	Puck Exhaust Valve
11	550-576	Puck Seat Insert
12	910-103	O-ring, Inner Ring, Exhaust
13	540-012	Retainer Ring
14	510-696	Exhaust Valve
15	520-022	Exhaust Valve Insert
16	550-590	Mount Block
17	510-019	O-ring
18	540-013	Housing Retaining Ring
19	545-300	Remote Exhaust Main Body Assembly
20	510-404	1st Stage Diamond Diaphragm Assembly
21	550-610	Top Diaphragm Cover
22	530-309	Cap Screw
23	550-618	Adapter Outlet
24	510-017	O-ring
25	510-026	O-ring
26	550-165	Valve Seat Insert-8
27	510-023	2nd Stage O-ring Seal
28	505-410	Diamond Exhaust Sub-Assembly
29	535-400	2nd Stage Diaphragm Spring
30	510-405	2nd Stage Diamond Diaphragm Assembly
31	545-310	Bottom Diaphragm Cover Assembly

